

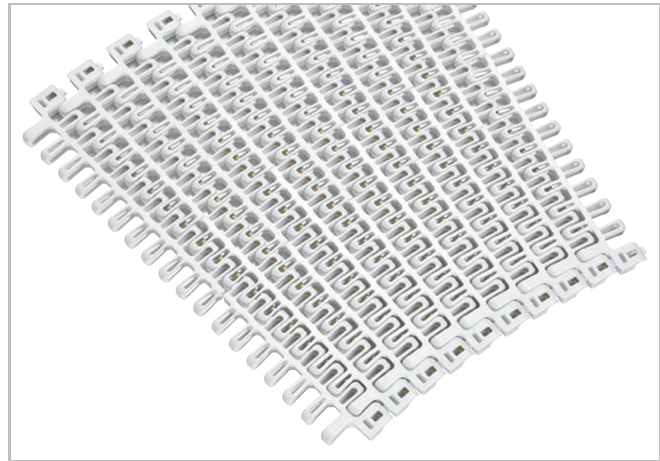
HabasitLINK®

M5290 Radius Flush Grid 2"



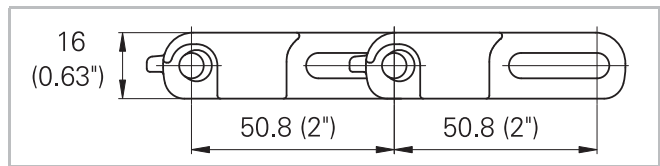
Description

- For radius and straight conveying, ideal for spiral applications (collapse factor 2.2)
- 55% open area; 85% open contact area; largest opening 15x17 mm (0.6"x0.67")
- Imperial belt width
- Food approved materials available
- Excellent for cooling and draining
- Rod diameter 6 mm (0.24")
- Smart Fit rod retention
- Large distance between wearstrips possible; max. 635 mm (25")
- Min. width 508 mm (20")



Available accessories

- Clip-on side guards
- Lane dividers



Belt data

Belt material			PP	POM
Rod material			POM	PA
Nominal tensile strength F'_N straight run	N/m		15000	21000
	lb/ft		1028	1439
Nominal tensile strength F_N in curve ⁽¹⁾	N		2330	3200
	lbf		516	720
Temperature range	°C		5 - 93	-40 - 93
	°F		40 - 200	-40 - 200
Belt weight m_B	kg/m ²		5.2	7.5
	lb/sqft		1.07	1.54

⁽¹⁾ For $b_0 > 610$ mm (24") higher values are admissible.

Diameter of idling rollers (minimum)		Diameter of support rollers (minimum)		Diameter for gravity take-up and center drive rollers (minimum)		Backbending radius for elevators without side guards or hold down devices (minimum)		Backbending radius for elevators with side guards or hold down devices (minimum)	
mm	inch	mm	inch	mm	inch	mm	inch	mm	inch
100	4	100	4	150	6	150	6	150.0	6

Standard range of belt widths b_0 and collapse factor Q ($R_{min} = Q \times b_0$)

Belt width mm (nom.)	508	559	610	660	711	762	813	864	914	965	1016	1067	1118	1168
Belt width inch (nom.)	20	22	24	26	28	30	32	34	36	38	40	42	44	46
Collapse factor Q	2.13	2.14	2.15	2.16	2.17	2.18	2.18	2.19	2.19	2.19	2.20	2.20	2.20	2.21
Belt width mm (nom.)	1219	1270	1321	1372	1422	1473	1524	1575						
Belt width inch (nom.)	48	50	52	54	56	58	60	62						
Collapse factor Q	2.21	2.21	2.21	2.21	2.22	2.22	2.22	2.22						

Belt widths larger than 1600 mm (63") are not recommended.

Real belt widths are in most cases 0.1% to 0.3% smaller.

For PP material up to 750 mm (30") -3 mm to 0 mm and -0.4% to 0% for wider belts.

For POM material up to 750 mm (30") -3 mm to 0 mm and -0.4% to 0% for wider belts.

Standard belt widths in increments of 1" (25.4 mm).

For detailed material properties refer to the HabasitLINK® Engineering Guidelines.

HabasitLINK®

M5290 Radius Flush Grid 2"



The nominal tensile strength is valid for 23 °C (73 °F). The admissible tensile force depends on the operating temperature near the drive sprockets. Within the temperature range allowed, the admissible tensile force may vary from 100% to 20% of the nominal tensile strength. For detailed information and correct calculation of effective tensile force refer to the Calculation Guide in the HabasitLINK® Engineering Guidelines.

Disclaimer

Product Application Disclaimer (valid for ALL Habasit products and mentioned on all PDS)

This disclaimer is made by and on behalf of Habasit and its affiliated companies, directors, employees, agents and contractors (hereinafter collectively "HABASIT") with respect to the products referred to herein (the "Products"). SAFETY WARNINGS SHOULD BE READ CAREFULLY AND ANY RECOMMENDED SAFETY PRECAUTIONS BE FOLLOWED STRICTLY! Please refer to the Safety Warnings herein, in the Habasit catalogue as well as installation and operating manuals. All indications / information as to the application, use and performance of the Products are recommendations provided with due diligence and care, but no representations or warranties of any kind are made as to their completeness, accuracy or suitability for a particular purpose. The data provided herein are based on laboratory application with small-scale test equipment, running at standard conditions, and do not necessarily match product performance in industrial use. New knowledge and experience may lead to re-assessments and modifications within a short period of time and without prior notice.

EXCEPT AS EXPLICITLY WARRANTED BY HABASIT, WHICH WARRANTIES ARE EXCLUSIVE AND IN LIEU OF ALL OTHER WARRANTIES, EXPRESS OR IMPLIED, THE PRODUCTS ARE PROVIDED "AS IS". HABASIT DISCLAIMS ALL OTHER WARRANTIES, EITHER EXPRESS OR IMPLIED, INCLUDING, BUT NOT LIMITED TO, IMPLIED WARRANTIES OF MERCHANTABILITY, FITNESS FOR A PARTICULAR PURPOSE, NON-INFRINGEMENT, OR ARISING FROM A COURSE OF DEALING, USAGE, OR TRADE PRACTICE, ALL OF WHICH ARE HEREBY EXCLUDED TO THE EXTENT ALLOWED BY APPLICABLE LAW. BECAUSE CONDITIONS OF USE IN INDUSTRIAL APPLICATION ARE OUTSIDE OF HABASIT'S CONTROL, HABASIT DOES NOT ASSUME ANY LIABILITY CONCERNING THE SUITABILITY AND PROCESS ABILITY OF THE PRODUCTS, INCLUDING INDICATIONS ON PROCESS RESULTS AND OUTPUT.